

BC27-2SCA

DOLPHIN RECESSED HIGH SPEED HAND DRYER

INSTALLATION INSTRUCTIONS



Please read carefully before use.

January 2021



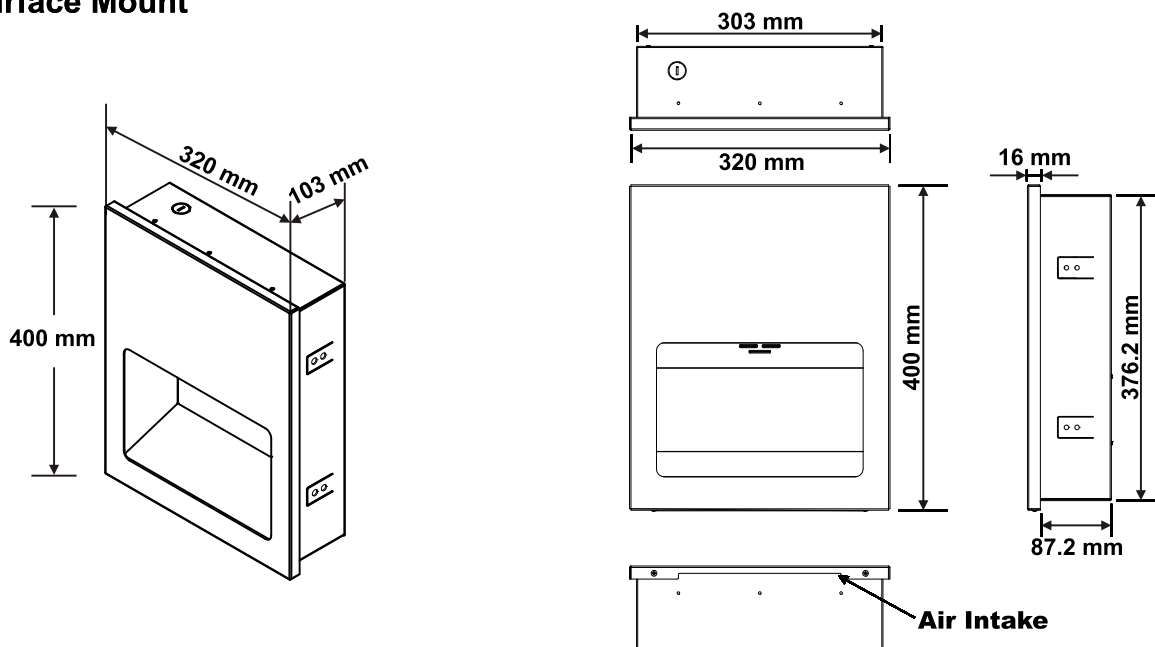


High-Speed Hand Dryer

BC27-2SCA

Operating Instructions and Parts Manual

Surface Mount



TECHNICAL SPECIFICATIONS

ITEM CATEGORY

PERFORMANCE DATA

Operating Voltage	220-240 Vac, 50/60 Hz, 0.84-1.0 kW
Warm Air Speed Output	70-82 m/s, adjustable
Motor Type	325-500 W, 22000-29000 r.p.m., Adjustable; Brush Type, Dual Ball Bearing
Motor Thermal Protection	Auto Resetting Thermostat turns unit off at 95 °C [203 °F]
Heater Element	500 W, adjustable
Heater Thermal Protection	Auto Resetting Thermostat turns unit off at 85 °C [185 °F] Resets at 75 °C [167 °F], Thermal cut-off at 142 °C [288 °F]
Drying Time	Less than 15 seconds
Stand-by Power	Less than 0.5 W
Circuit Operation	Infrared Automatic, self adjusting
Sensor Range	Standard [150 ± 20 mm], Adjustable, The range is [100-230 mm]
Timing Protection	60 seconds auto shut off
Sound Level	MIN 72.8 dB to 77.6 dB MAX @ 1m
Drip proof	IP24
Isolation	CLASS 1
Net Weight	6.6 kg
Shipping Weight	8.2 kg
Unit Size	320 mm (W) x 400 mm (H) x 103 mm (D)

FRONT PLATE TYPE/ FRONT PLATE FINISH

BC27-2SCA- Stainless steel; #4 satin finished. (AISI 304 t:1.2 mm)

Operating Instructions and Parts Manual

Recessed high speed hand dryer

General safety information

⚠ WARNING

**This product is
lation by a qualified
se 1.2 mm²
r wiring.**

⚠ DANGER

**Failure to properly
result in severe
and/or death.**

⚠ WARNING

Disconnect power at the main service panel before installing or removing the disconnection device. The device is not to be installed in the fixed wiring in accordance with the wiring rules.

⚠ WARNING

All units must be wire service. The be connected to the

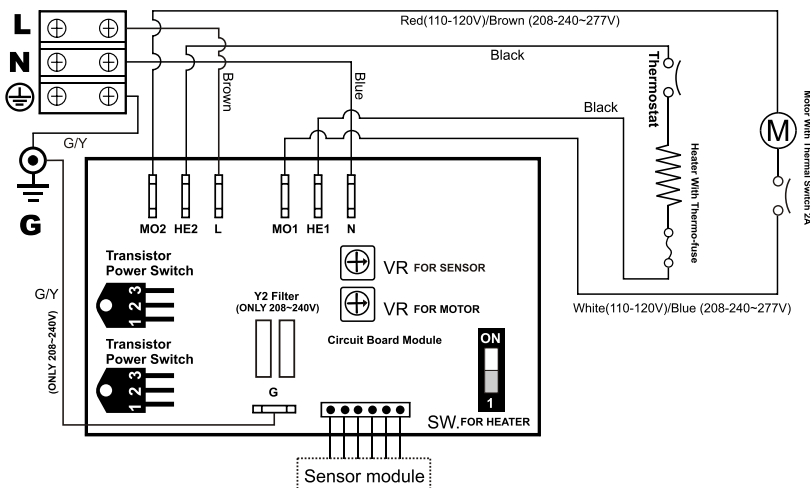
【Type Y attachment】

If the power supply cord is damaged, it must be replaced by the manufacturer or its service agent or a qualified person in order to avoid a hazard. Disconnect the fixed wiring only in accordance with the wiring rules.

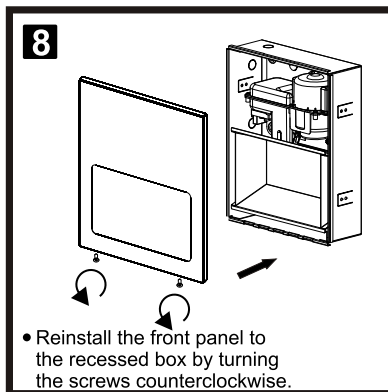
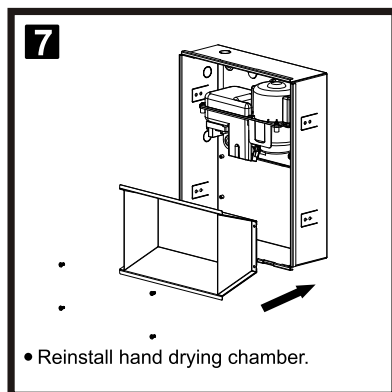
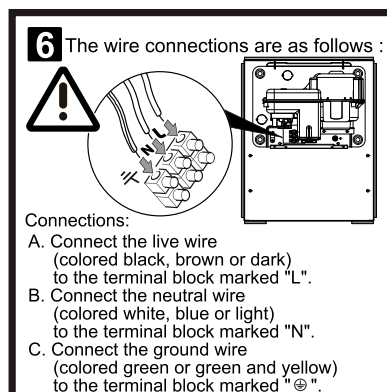
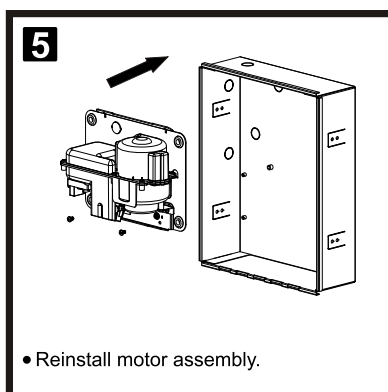
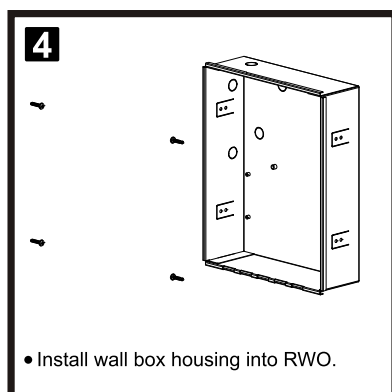
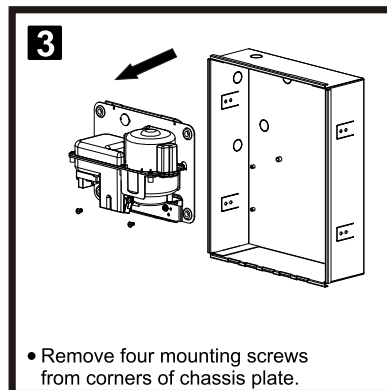
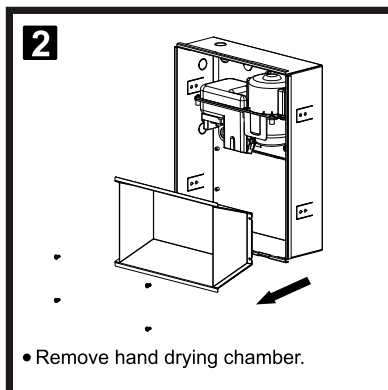
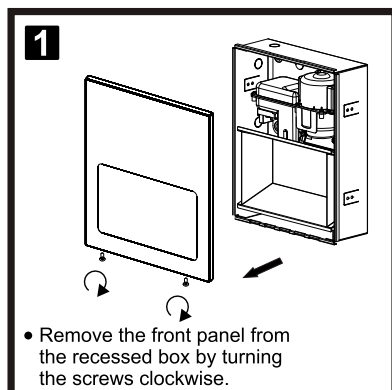
This appliance is not intended for use by persons (including children) with reduced physical, sensory or mental capabilities, or lack of experience and knowledge, unless they have been given supervision or instruction concerning use of the appliance by a person responsible for their safety.

Children should be supervised to ensure that they do not play with the appliance.

Circuit Diagram



Installation Rough wall opening: 307 x 380 x 91 mm



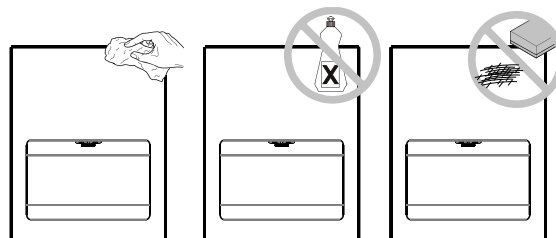
Recommended mounting heights - from bottom edge of dryer above finished floor (AFF)

Men	1270 mm
Women	1194 mm
Children 4-7 years	889 mm
Children 8-10 years	991 mm
Children 11-13 years	1092 mm
Children 14-16 years	1194 mm
Wheelchair	1016 mm

Cleaning and Maintenance

Periodic cleaning of the unit is recommended to ensure optimum performance.

- Disconnect the electrical supply.
- Remove the two cover-mounting screws.
- Remove the cover.
- Clean all dust lint from the interior of the dryer.
- Wipe the cover with a damp cloth and mild cleaning solution. Do not Soak. Never use abrasives to clean the cover. Dry completely.
- Replace the cover. Do not over tighten the screws.

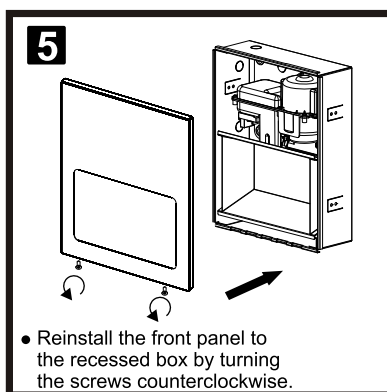
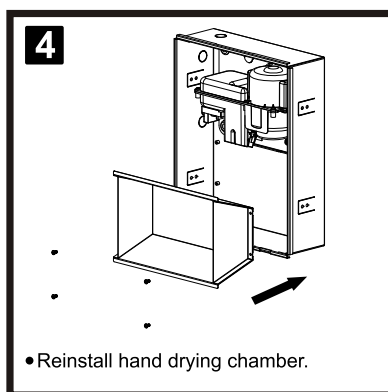
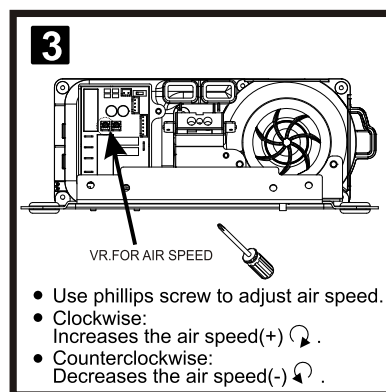
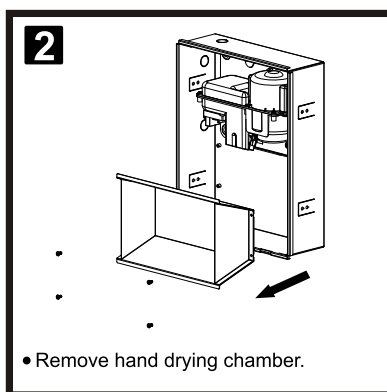
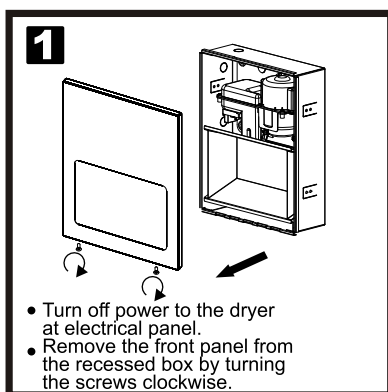


Operation

- No-touch operation.
- Shake excess water from hands.
- Place hands under the outlet to start operation.
- Rub hands lightly and rapidly.
- Stops automatically after hands are removed.

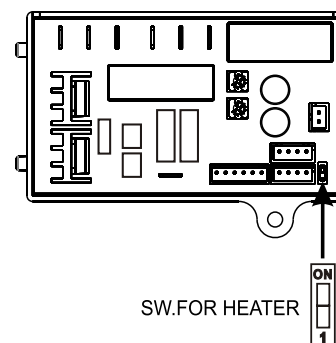
Setting Adjustment

A. Warm air speed adjustment



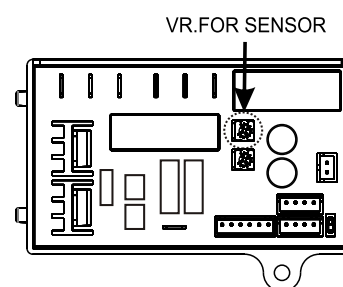
B. Heater Element Switch ON/OFF

1. Switch off the power, loosen the cover screws and remove the cover.
2. Adjust the heater switch on the CBM with a small plastic or wood flat blade probe.
 - 2-1. Heater ON: Slide the switch to "ON".
 - 2-2. Heater OFF: Slide the switch to "1".



C. Sensor range adjustment

1. The recommended unit sensor range is 150 mm.
This can be adjusted from 100 mm to 230 mm.
2. Clockwise: Increases the sensing range(+) ↻.
3. Counterclockwise: Decreases the sensing range(-) ↻.
4. **DO NOT OVERTURN!**



Dolphin Solutions Ltd

Southpoint, Compass Park, Bodiam, Robertsbridge TN32 5BS

Tel: 01424 202224

Fax: 01424 205200

www.dolphinsolutions.co.uk

info@dolphinsolutions.co.uk

