



BCL632F

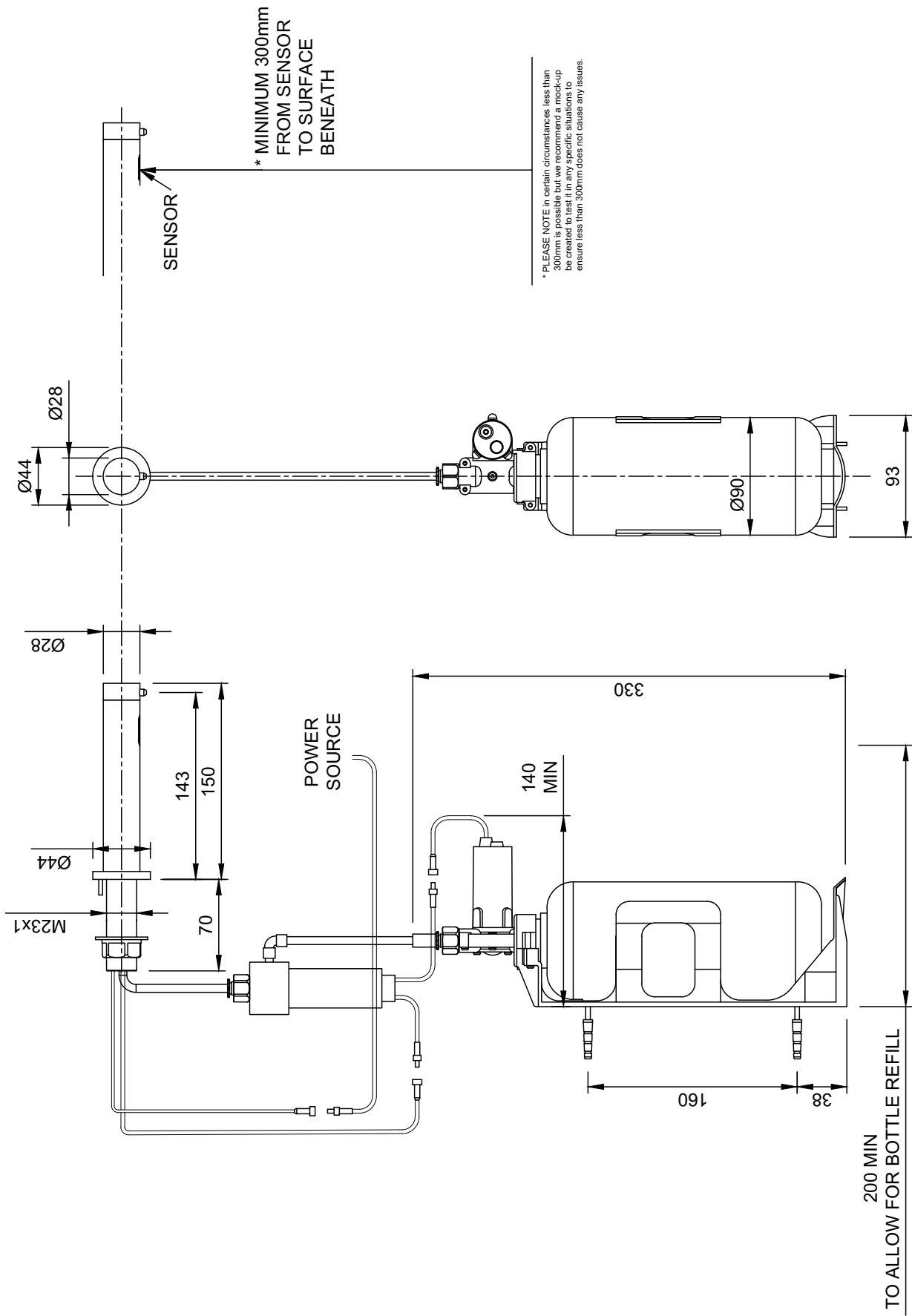
DOLPHIN PANEL MOUNTED INFRARED SOAP DISPENSER

- > Electronic foam soap dispenser activated by an infrared sensor: When the user places his hand within the sensor range, the soap dispenser delivers the foam soap.
- > A big improvement in soap dispensing foaming soap drastically reduces soap consumption when compared to standard liquid soap
- > Integral peristaltic pump prevent backflow ensuring a germ free environment and, in conjunction with the touch free operation, eliminates the risks of contamination
- > Soap and air settings can be adjusted to personalise soap 'foamability' via a remote control which easy to use and designed for the janitor or client to use (**DB53**). One of these is supplied FOC with every 6 dispensers or can be purchased separately.
- > Sensor settings (range etc) can be adjusted with a separate remote control – this is a more complex unit and designed more for maintenance staff to use (**DB52**)
- > Available in high quality polished chrome (**BCL632FC**) or brushed satin (**BCL632FS-2**) finishes on solid brass construction with other finishes available on request
- > Panel mounted it includes a 1 litre foam soap bottle, integral bottle support and fixing kit
- > Designed to match Dolphin Blue **DB400** and **DB1400** series taps
- > Important: please contact Dolphin Technical Helpline 01424 202224 /consult fitting instructions for design guidance
- > Power connections: soap dispenser: female / power source: male
- > Draws maximum current of 0.5A at sensor activation
- > 2 year guarantee
- > Powered by 12v Transformer; a 3pin version is supplied complete with each dispenser
- > Suitable for Hand Sanitiser

LENGTH	150 MM
DIAMETER	28 MM
CAPACITY	1000 ML

PRODUCT CODES

- > **BCL632FC** Polished Chrome Plate
- > **BCL632FS-2** Brushed (Satin) Chrome Plate



BCL632F

DOLPHIN PANEL MOUNTED INFRARED SOAP DISPENSER