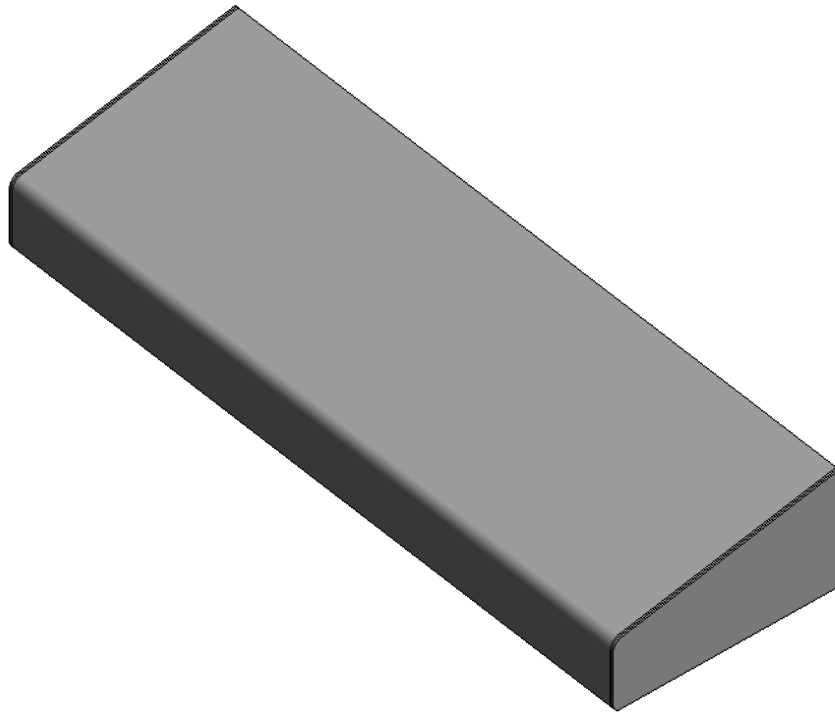


# BELL-CHEM PRODUCTS COMPANY DOLPHIN STAINLESS STEEL SHELF BC 751



Family Types

Name: BC 751 Dolphin Stainless Steel Shelf

| Parameter            | Value   |
|----------------------|---|
| <b>Dimensions</b>    |   |
| Width                | 400mm   |
| Projection           | 150mm   |
| Height               | 50mm  |
| <b>General</b>       |   |
| Product Page Link    | <a href="http://www.dolphindispensers.co.uk/products/bc750/bc751-dolphin-stainless-steel-shelf/274.htm">http://www.dolphindispensers.co.uk/products/bc750/bc751-dolphin-stainless-steel-shelf/274.htm</a> |
| Product Data         | Prestige quality. Satin stainless steel. Almost vandal proof. ideal for public or prestigious washrooms. Suitable for disabled washrooms.   |
| <b>Identity Data</b> |   |
| URL                  | <a href="http://www.dolphindispensers.co.uk">www.dolphindispensers.co.uk</a>  |
| Type Comments        |   |
| Tel No.              | +44 (0) 1424 202224   |
| Model                | BC 751  |
| Manufacturer         | Bell-Chem products Co.  |
| Fax No.              | +44 (0) 1424 205200   |
| Email                | <a href="mailto:info@dolphindispensers.co.uk">info@dolphindispensers.co.uk</a>  |
| Description          | Stainless Steel Shelf   |
| Assembly Code        | E1010900  |
| Address              | Southpoint, Compass Park, Bodiam, Robertsbridge, TN32 5BS   |
| Keynote              |   |
| Cost                 |   |

Family Types: New..., Rename..., Delete

Parameters: Add..., Modify..., Remove

Lookup Tables: Manage...

OK Cancel Apply Help