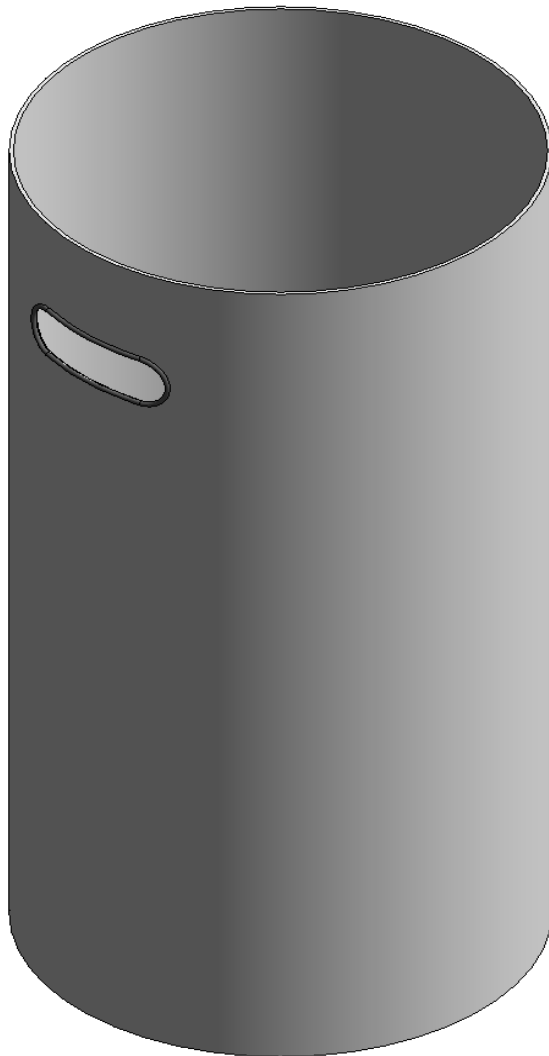


DOLPHIN SOLUTIONS LIMITED  
DOLPHIN WASTE BIN  
CIRCULAR  
09.1160



Family Types

Name: 09.1160 Dolphin Waste Bin - Circular

Parameter	Value
<b>Text</b>	
Warranty	This product is covered by a 12-month warranty from the date of purchase to
Care and Maintenance	Clean with soap and warm water, dry with a clean soft cloth. To maintain finis
<b>Materials and Finishes</b>	
Material	Bin = 1.0mm stainless steel 1.4301 (304) grade Casters = Black plastic
Finish	Brushed satin finish
<b>Dimensions</b>	
Width	Ø315
Weight	Approximate unit weight = 6.8kg
Height	600mm
<b>General</b>	
Usage	High Traffic Areas
Product Page Link	<a href="http://www.dolphindispensers.co.uk/products/dolphin-waste-bin-circular">http://www.dolphindispensers.co.uk/products/dolphin-waste-bin-circular</a>
Product Data	Floor standing satin finish stainless steel circular waste bin with black rubber e
Capacity Bin	45 litres
<b>Identity Data</b>	
URL	<a href="http://www.dolphindispensers.co.uk">www.dolphindispensers.co.uk</a>
Type Comments	
Tel No.	+44 (0) 1424 202224
Model	09.1160
Manufacturer	Dolphin Solutions Limited
Fax No.	+44 (0) 1424 205200
Email	<a href="mailto:info@dolphindispensers.co.uk">info@dolphindispensers.co.uk</a>
Description	Stainless Steel Circular Bin with Castors
Assembly Code	E1010900
Address	Southpoint, Compass Park, Bodiam, Robertsbridge, TN32 5BS
Keynote	
Cost	

Family Types: New..., Rename..., Delete

Parameters: Add..., Modify..., Remove

Lookup Tables: Manage...

OK Cancel Apply Help